

# How we can help with professional and clinical support to primary care networks

## Clinical services supporting medicines optimisation

As your NHS partner, Midlands and Lancashire Commissioning Support Unit (MLCSU) can provide a full range of medicines management and optimisation (MMO) services to primary care networks (PCNs).

Our support around strategy, workplan development, training and clinical supervision can, through seamless collaborative working, support PCNs to achieve clear, positive, and quantifiable impacts including optimised medicines use, improved medicines safety and improved health outcomes for patients.

We can help improve medicines related patient safety and health outcomes, help tackle local health inequalities and manage local population health. Support is available with:

- Strategy and workplan development
- Training and clinical supervision
- Expert support and peer review.

We provide training and guidance sessions on Structured Medication Reviews (SMR), Antimicrobial Stewardship, Safety & High-Risk Drugs and others. We have available SMR templates, standardised searches, intervention recording tools and workplans for use at practice or PCN level. We can provide all staff with individual personal development plans with agreed objectives for the next 12 months.

## We have the right team with the right skills

Our MMO teams are ideally placed to provide the expertise, skills, and capacity to enable delivery of your vision for better patient care

We can support your PCN to meet medicines related contractual requirements as defined in the national directed enhanced service (DES) or local ICS / place-based initiatives, such as Enhanced Health in Care Homes, Structured Medication Reviews and Medicines Optimisation programmes.

Since the creation of our service in 2013, we have established a reputation for delivering a high quality, clinically led service.

## Benefits to the NHS

Closer monitoring and management of medicines improves patient care and wellbeing. This reduces avoidable urgent or emergency hospital attendances and the risks of medicine-related side effects. The demand on costly secondary and tertiary care services can be reduced due to improved management of patients in primary care.

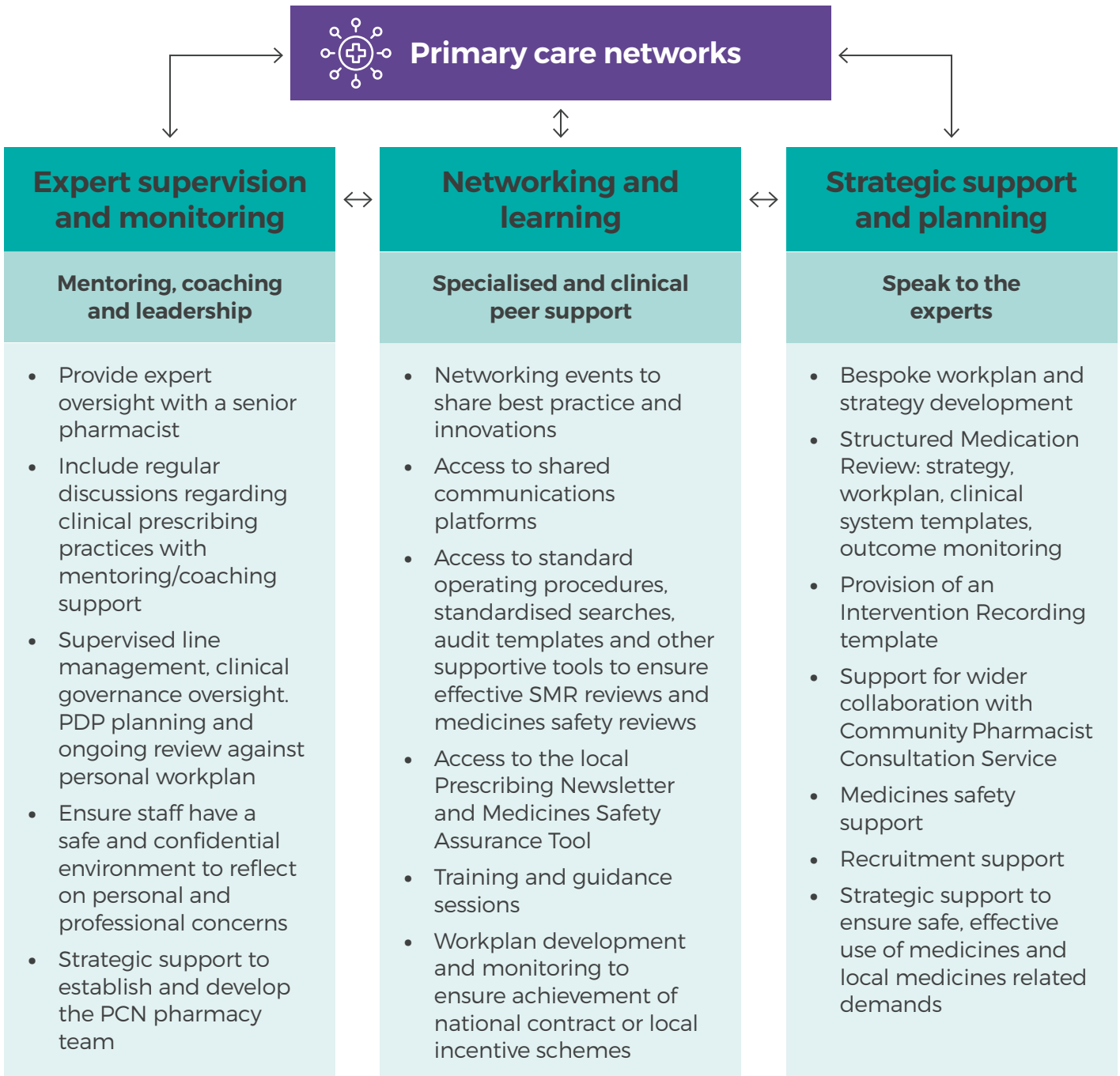
Clinical pharmacists can help reduce workload pressures for GPs and can work with the PCN multi-disciplinary team to ensure efficient medicines optimisation.

For more information on our products and services contact us today:

**Email:** [mlcsu.partnerships@nhs.net](mailto:mlcsu.partnerships@nhs.net)

Visit us [mlcsu.co.uk](http://mlcsu.co.uk)

We work with you to understand your challenges and respond to specific requests. Along with our established offers of support, we have a track record of delivering bespoke solutions.



Please [get in touch](#) or visit our [web page](#) to learn more about how we can support you.

For more information on our products and services contact us today:

**Email:** [mlcsu.partnerships@nhs.net](mailto:mlcsu.partnerships@nhs.net)

Visit us [mlcsu.co.uk](http://mlcsu.co.uk)